

AREBOS

Spa Pool Copenhagen/ Bora Bora

AR-HE-SPA7DP

AR-HE-SPA7DH



*Product may differ from picture (sample)

Please follow all security measures in this user's manual to ensure a secure use.



Thank you for trusting in AREBOS.

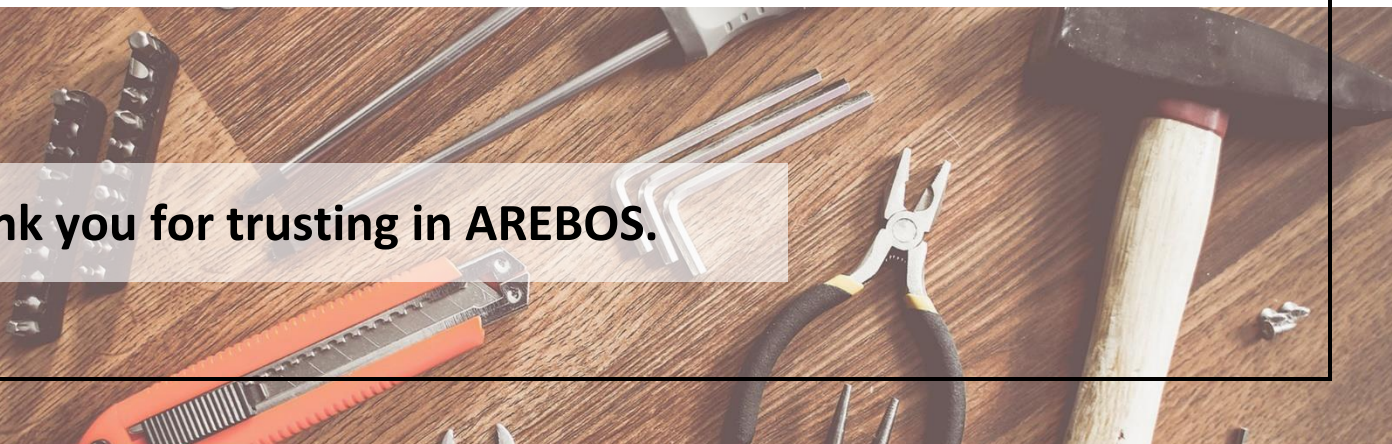


Table of Contents

1. Safety Instructions	3
1.1 Explanation of the symbols.....	3
1.2 General Safety Instructions	4
2. Parts List	5
3. Technical Specifications	5
4. Set Up	5
4.1 Before setting up outdoors.....	5
4.2 Before setting up indoors	6
4.3 Setting up	6
4.4 Tightening Inflation Valve.....	13
5. Operation	13
5.1 Setting the temperature	13
5.2 Inflate / Air jets.....	13
5.3 Heater.....	13
5.4 Filtration System.....	14
6. Maintenance and Repair	14
7. Storage	15
7.1 How to empty your spa	15
7.2 How to deflate your spa	15
7.3 Storing	15
7.4 When to change your spa filter	15
7.5 Winter storage.....	16
8. Troubleshooting	16
9. Environmentally friendly disposal	17
9.1 Disposal and packaging.....	17
9.2 Disposal of old equipment.....	17
EU Declaration of Conformity	18

Thank you for purchasing our product. Please read the operating instructions carefully before using the product for the first time. If you give the product to a third party, this manual must be handed over with it. Keep the instruction manual for future reference. The drawings in this manual may not match the physical objects. Please refer to the physical objects.

1. Safety Instructions

1.1 Explanation of the symbols



This product **must not** be disposed of with household waste!



By means of a CE marking, it can be recognized that a product complies with the legal requirements of European legal standards and therefore may be traded within the European Community.



Take special care when using this article



Warning of electrical voltage!



Warning! Read the safety instructions carefully. Failure to follow the safety precautions could result in serious injury or damage. Keep the operating instructions in a safe place.



Note: Pull out the mains plug!



Warning! Connect an earth terminal to the ground!

1.2 General Safety Instructions

- Appliance should be supplied through a residual current device (RCD/GFCI type) with a rated tripping current not exceeding 30mA.
- Electric installations should fulfil the requirements of local standards. Earthed appliances must be permanently connected to fixed wiring.
- Any damage to electrical cable should be replaced by a competent party immediately before further use.
- It's recommended **not** to use an extension cord to connect to electrical supply.
- **RISK OF ELECTRIC SHOCK.** Never operate any external/additional electrical appliance when in the Spa or when your body is wet. Keep electrical appliances away from the spa.
- **RISK OF ACCIDENTAL DROWNING.** Children are forbidden from using the spa unless they are supervised at all times by a responsible adult.
- For health and safety reasons, we do not recommend children under 8 years old use our hot tubs.
- For children 8 years + we recommend the temperature be set no higher than 37°C.
- When not in use, cover should be fitted and locked to help retain heat. This also prevents unsupervised children accessing the spa.
- Shower before using your spa. Cosmetic products, lotions etc on skin can degrade water quality.
- Do not switch on if there is any possibility that water in the spa or control system is frozen.
- Pets should be kept away from your spa at all times.
- Soaking in hot water during pregnancy can cause damage to the unborn foetus. If you have any specific concerns please consult your doctor before continuing to use your hot tub.
- Use of alcohol, drugs or medication before or during use of your spa can increase risk of drowning.
- Those with history of heart disease, low/high blood pressure, circulatory system problems or diabetes should consult a doctor before using spa. People using medication should consult their doctor before using the spa. Some medications may cause drowsiness, whilst other medication may affect heart rate, blood pressure and circulation during use.
- Water in a spa should never exceed 42°C (107°F). Operating temperatures between 38-40°C (100-104°F) are considered safe for a healthy adult. Lower temperatures are recommended for younger children, and when use exceeds 10 continuous minutes.
- A max temperature of 42°C can be programmed for the water - Once cover is removed, water temperature will automatically drop as heat is released through evaporation. The additional 2°C compensates for heat loss that may occur. Once you are ready to use, reduce maximum temperature to recommended 38-40°C (100-104°F) and ensure that temperature reading is no greater than 40°C.
- Immediately get out of your spa if you feel uncomfortable or sleepy.
- Do not turn spa on when it is empty. This could cause irreparable damage to pump system which would nullify any warranty period.
- To avoid damaging your pump & heating system during colder weather, your spa is fitted with 365 FreezeGuard Technology. Set the temperature to 50C, and this will prevent any water in the system from freezing.
- Always add chemicals to jug of water to avoid strong fumes or violent reactions that may result in a hazardous chemical spray.
- To avoid accidental resetting of thermal cut-out, this appliance must not be supplied through an external switching device, such as a timer, or connected to a circuit that is regularly switched on and off by the utility.
- **WARNING:** Adequate drainage has to be provided to deal with overflow of water.
- **IMPORTANT:** For set-up/installation, the surface must be smooth, flat, level and capable of evenly supporting the weight of the spa, water and users e.g. 6 Person Square spa filled weight:

980kg (approx) plus combined weight of occupants.

- It is the responsibility of the spa's owner to assure integrity of the site at all times.

2. Parts List

- Please check all parts are present in your box before first use (look 3. Technical Specifications).

3. Technical Specifications

Model	AR-HE-SPA7DH/P
Engine power (heating)	1800 W
Engine power (massaging)	600 W
Power supply	220-240 V/ 50 Hz
Filter pump power	12 V / 30 W 1400 L/H
Number of filters	1
Number of filtration lamellas	80
Temperature increasing rate	1.5-2.5 / hour
Length of power cable	3.5 M
Seating capacity	7
Max. water capacity	1120 L
Max. temperature	40 °C
Number of massage jets	130-140
Material of Top Lid	Laminated PVC top cover with insulation coating
Material of Spa pool (inner wall)	Drop-stitch
Material of Spa pool (outer wall / shell)	Drop-stitch
Thickness of memory foam	5 mm
Delivery scope PACKET 1	Spa pool LINER, Pool cover, Ground Mat, Hand Pump with gauge, Filter 1x, Filter cover 1x, Inflation hose, safety locking clip keys 2x, repair patch, valve wrench
Delivery scope PACKET 2	Control box, Connector hoses 3x, O-ring 6x
Size of spa pool external	Ø1.80m x0.65m
Size of spa pool internal	Ø1.75m x0.65m
Net weight PACKET 1	22 kg
Net weight PACKET 2	9 kg

4. Set Up

4.1 Before setting up outdoors

1. Setup your spa on a solid, level, foundation avoiding sharp objects as they could damage the

hot tub.

2. Ensure your spa hot tub is plugged into an external mains socket, professionally fitted, with weather proofing. We DO NOT recommend using an extension cable as this can be a fire risk.
3. Do not place your hot tub in direct sunlight, or over inflate it, as this will cause the hot tub to bulge in areas as the PVC heats up in the direct sun. This bulging could also put additional stress on the internal welds leading to a weld failure.
4. During filling, emptying or when in use, water may spill out. Install near to a drainage point capable of managing the volume of water.

4.2 Before setting up indoors

1. Floor must be able to withstand weight of the spa's occupants.
2. Floor should be a non-slip, level surface.
3. Before placing your hot tub indoors, ensure suitable drainage is available and can be reached. Carefully consider the placement of your hot tub before installation.

4.3 Setting up

1. Lay groundsheet on a flat, even surface, clear of sharp objects.



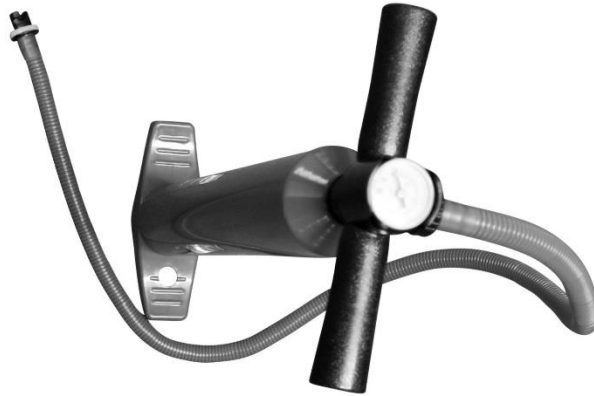
2. Unpack the spa on groundsheet.



3. Remove protective plastic from clips and connectors.



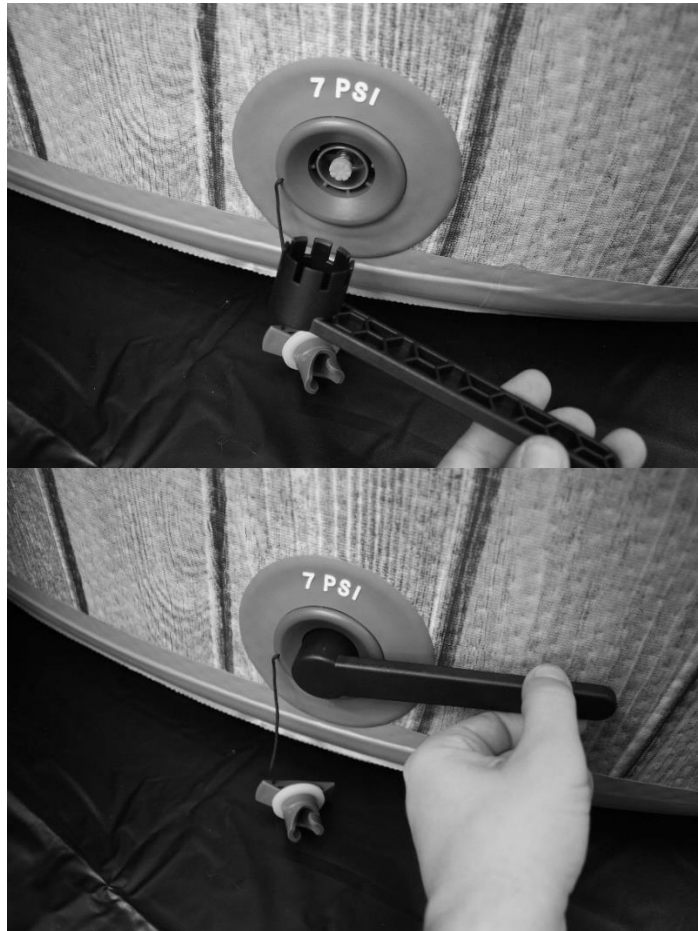
4. Inflation Valve, Air jet Connector, Water Inlet, Water Outlet, Drainage Outlet
5. Assemble Hand Pump, Pressure Gauge and Hose. Insert and twist until locked.



6. Locate Inflation Valve. Remove valve cap. Connect hose turning clockwise to lock. Central button MUST be up.
7. Use dual action hand pump to inflate. (Air pressure 7 PSI). Approx. 7 PSI.
8. Inflation takes 2 minutes (approx.). **Note:** Drainage Outlet should be positioned on outside of the hot tub.



9. Once inflated turn anti-clockwise to release inflation hose and replace valve cap.



10. Unpack external unit screw 3x hoses onto external unit in order shown.



11. Align hoses with respective connectors and screw into place. Plug in, switch on.



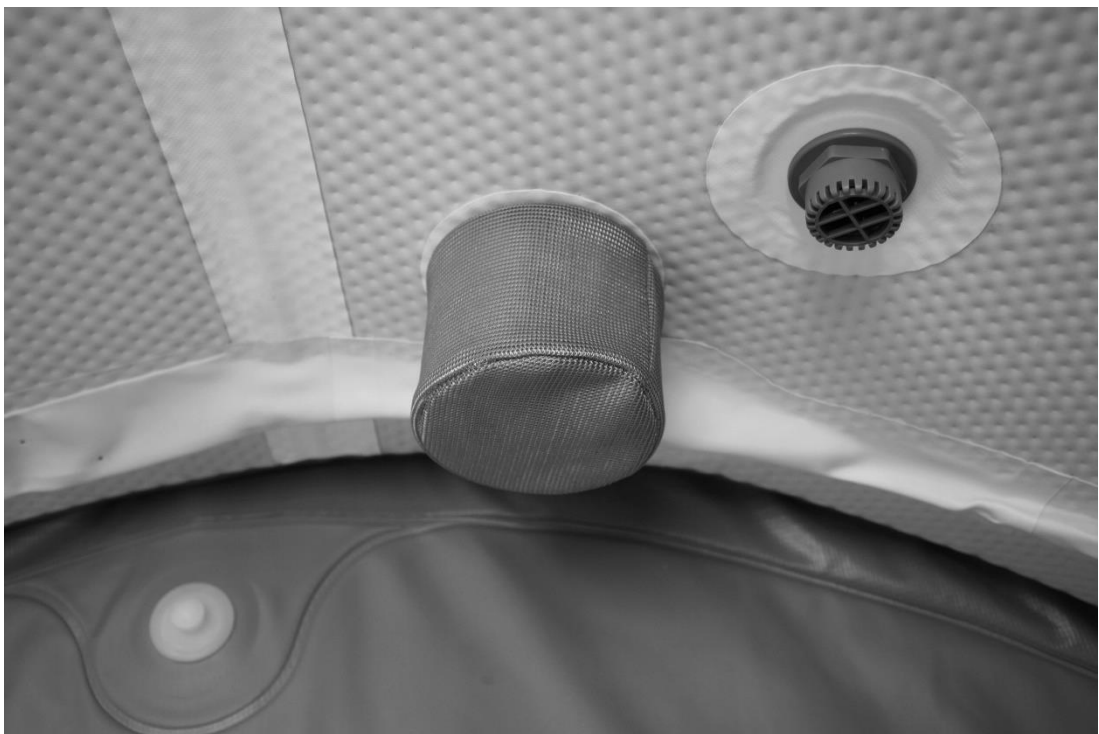
12. Inner features: Water Circulation Outlet, Filter Connector and Drainage Plug.



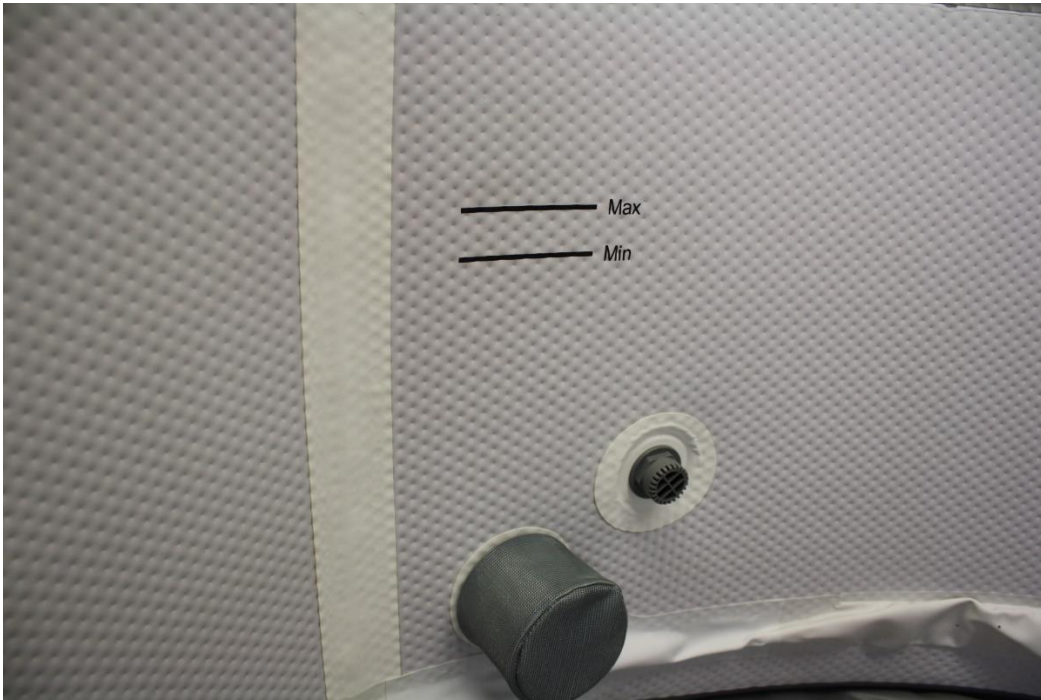
13. Screw Filter Cartridge onto Filter Connector.



14. Add Filter Protector Cover onto Filter Cartridge.



15. Add water to level. No higher than “MAX” level.



16. Set temperature on control panel.



17. Clip on Top Cover to retain the heat.



18. Double lock clips with Safety Locking Keys)



4.4 Tightening Inflation Valve

- Over time inflation valve may become loose. Use supplied valve wrench to tighten, maintaining air seal.
- **Important:** Whilst using the wrench – Do not loosen valve as it will fail.



5. Operation

5.1 Setting the temperature

- Press **SET TEMP/LOCK** and the numbers on display screen will start to flash. Increase/decrease temperature by pressing **TEMP UP** or **TEMP DOWN**.
- Choose desired temperature, press **SET TEMP/LOCK** again to confirm. Temperatures can be set between the range of 5°C to 42°C. (see safety instructions for recommended operating temperatures).

5.2 Inflate / Air jets

- Press **INFLATE / AIR JETS** to start air jets – a red light will appear. Press again and air jets will stop working – red light will go out.
- Air jets stop automatically after 20 minutes. To reset, wait for 10 minutes and press **INFLATE / AIR JETS**. Air jets can be stopped / started any time during their 20-minute cycle.
- **Air Jets will stop after 20 minutes to avoid internal pump over-heating.**

5.3 Heater

- Press **HEATER**, red light will appear. Press **HEATER** again and heating system will stop, red light will go out.
- When heater system is on, filter system will switch on automatically to circulate water. When temperature has reached 1°C above pre-set temperature, heating system will stop working, but light will remain on. Filter pump will continue to operate even when heater is not functioning.
- When water falls 1°C below pre-set temperature, heating system will automatically heat

water back to 1°C above selected temperature. Once achieved, heater will stop to allow temperature to settle at pre-set value.

5.4 Filtration System

- Press **FILTER**, red light will appear, pump will start to work. Press **FILTER** again to stop pump, red light will go out.
- After approx. 168 hours, **FC** will appear on display screen (flashing) with a warning tone. Red light will be lit on **FILTER**, pump **will not** be operational. Heating system will also not work and red light will be off.
- To make sure filtration system is off, press **FILTER**. **FC** on display screen will disappear as well as warning tone. Water temperature will be displayed, all functions will return to normal. **FC** and warning tone remind user to replace filter.

6. Maintenance and Repair

Water level

Water should be filled and maintained between “Min” and “Max” fill lines as indicated on inner wall of your spa.

Importance of water treatment

You need to regularly monitor and appropriately treat the water in your spa.

People with the following traits are at higher risk including:

- Diabetes, lung and heart disease
- Smokers and heavy drinkers
- Anyone with an impaired immune system
- People suffering from chronic respiratory or kidney disease.

For more information contact your doctor.

Water and legionnaires disease?

Legionnaires’ disease can be contracted by inhaling small droplets of water (called aerosols), which are suspended in the air and contain the bacteria. Certain conditions increase the risk of Legionella if:

- Water temperature in all or some parts of the system is between 20-45°C, which is suitable for growth of the bacteria.
- It is possible for breathable water droplets to be created and water is stored and/or re-circulated.
- There are deposits that can support bacterial growth providing a source of nutrients for the organism e.g. rust, sludge, scale, organic matter and biofilms (from the body).

Cleaning

Detergent residues, dissolved solids from bathing suits and chemicals will gradually accumulate in the water. To clean your spa, use soap and water then rinse thoroughly.

Please note: do not use hard brushes or abrasive cleaners.

Repairing punctures

If your spa is torn/punctured, use repair patches. Completely dry area to be repaired, apply strong adhesive to repair patch and then cover the damaged area. Smooth the surface to remove any air bubbles. Leave to dry for 12 hours before using the spa.

7. Storage

7.1 How to empty your spa

1. Switch off spa at electrical mains.
2. Unscrew cap from drainage outlet, located near pump system of the spa. Ensure drainage plug is inserted to prevent unexpected draining.
3. Remove drainage plug from outlet within floor of spa, so water can flow out.
4. Once drained use a sponge to absorb excess water. Switch spa on, allowing you to operate air jet function for up to 20 minutes (one full cycle) to drain water and dry out pipeline. If not completely dry after first cycle – repeat.
5. When draining has finished, replace drainage plug and drainage outlet cap.
6. Disconnect the pump and heating system and dry thoroughly.

7.2 How to deflate your spa

1. Remove filter cartridge and filter sock.
2. Locate inflation valve.
3. Remove valve cap by twisting 90° anti-clockwise.
4. Press inflation valve down, twisting 90° clockwise to lock in place, releasing air.
5. Fold away carefully removing as much air as possible through open valve.
6. When fully deflated, turn inflation valve 90° anti-clockwise to close – button will pop up.
7. Replace valve cap and turn 90° clockwise to lock.

7.3 Storing

Make sure all water is completely drained from the spa and pump system. This is vital in extending the life of your spa. We recommend the use of a wet/dry vacuum to help blow out / suck up water from pipes and pump lines. Remove filter cartridge. The spa should be placed in bag provided and stored in a dry place, raised off floor and away from extreme temperatures.

Please note: When not in use, store in a place that is dry and a moderate temperature, as subzero temperatures can severely damage your spa.

7.4 When to change your spa filter

Keep your spa hot tub clean and safe from contaminants. For optimum performance, unscrew the filter and rinse with clean water after every use to remove any small particles and residue. The filter is one of the most important elements to ensure your spa hot tub works effectively.

1. Remove filter “sock” protective cover then remove filter.
2. Rinse the filter under a cold tap and reuse. Alternatively, machine wash your filter (place in a pillowcase) to keep it clean and to maintain its performance.

Replace your old filter with a new one if:

- The filter remains soiled after cleaning
 - Holes are visible in the paper
 - The paper is noticeably worn
3. Replace filter “sock” protective cover over filter and attach to filter connector by turning it clockwise. Do not overtighten, as this may cause a “rattling” noise.

Remember! Check your filter every day!

To help to keep your water clean, check your filter cartridge every day.

7.5 Winter storage

Drain all the water from the pool.

Remove the filter cartridge.

Clean and dry the SPA and attachments.

Expel all the air from the pool.

Loosely fold up the pool, avoiding sharp corners to prevent damage.

Store the pool in a dry, frost-free place.

The original packaging can be used for storage.

Caution !

Plastic can become brittle and fragile when it is exposed to sub-zero temperatures.

Freezing can severely damage the pool. Improper winter storage may invalidate the warranty.

The manufacturer cannot accept liability for damage to the pool and its components resulting from the use of antifreeze agents.

8. Troubleshooting

Problems	Potential causes	Solutions
Air jet system is not operating	Air pump too hot. Something wrong with power box. Air pump in cooling mode.	Unplug system. After air pump has cooled, insert plug and press air jets button to activate. Wait for 10 Minutes and restart. Call customer service if does not reset.
Heating system does not operate.	Temperature is set too low. Dirty filter cartridge. Improper water levels. Heating element failure.	Set to a higher temperature (20 – 42°C) than current water temperature. Clean/replace filter cartridge. Add water to specified levels. Call customer service if does not reset.
Filtering system does not operate / Rattling noise when switching filter on	Dirty filter cartridge. Something wrong with power box.	Clean/replace filter cartridge. Call customer service if it does not reset. Ask a professional electrician to check household electrical supply if functioning correctly.
Spa leakage	Spa is torn or punctured	Use repair patch provided.
Water not clean	Insufficient filtering time. Dirty filter cartridge. Improper water maintenance.	Increase filtration time. Clean/replace filter cartridge. Refer to chemical manufacturer's instructions.
Display temperature is higher than 42°C, after stopping heating function.	Residual water in the spa will continue to be heated by residual temperature. Water inlet through filter system may be blocked.	Unplug from mains and wait. Temperature will start to reduce and return to normal. Clean the inlet. Call customer service if does not reset.

Control Panel Error Codes

Code	Cause	Solution
FC	When filtration system has worked for approx. 168 hours, FC will appear on display with a warning tone. Red light will still be lit on filter, pump will not be operational. Heating system will not work, and red light will be out on heater.	Check filter and change if necessary. Once done, press filter again. FC error code will disappear, and warning tone will stop. Water temperature will be displayed, all functions will return to normal.
SL/HL	Temperature Issue	Contact customer service
SH	Water Temperature Sensor Issue	Contact customer service

9. Environmentally friendly disposal

Warning Danger of suffocation! Packaging material is dangerous for children. Never let children play with packaging material.

9.1 Disposal and packaging

- The packaging of your unit consists of materials that are necessary to guarantee effective protection during transport. These materials are fully recyclable and therefore reduce the environmental impact. Dispose of the packaging in a bin for recyclable materials.

9.2 Disposal of old equipment

- Old appliances must be disposed of in accordance with the guidelines and regulations of the local waste disposal authority. Check with your local administration for the address of the nearest recycling centre and deliver your appliance there.



The symbol of the crossed-out dustbin on a Waste electrical or electronic equipment indicates that it must not be disposed of with household waste at the end of its life. Collection points for waste electrical and electronic equipment are available free of charge in your area. You can obtain the addresses from your city or local government. You can find out about other return options created by us on our website www.arebos.de.



The separate collection of Waste electrical or electronic equipment is intended to enable the reuse, recycling or other forms of recovery of Waste electrical or electronic equipment and to avoid the negative consequences of disposal on the environment and human health.

Our customer service number: Tel. +44 (0) 208 068 5604

Fax: +49 (0) 931 4523 2799 / E-Mail: info@arebos.de

Office address: Canbolat Vertriebs GmbH • Gneisenaustraße 10-11 • 97074 Würzburg

Return address can be found in the imprint: <https://www.arebos.de/impressum/>

EU Declaration of Conformity

We, the

Canbolat Vertriebs GmbH, Gneisenaustraße 10-11, 97074 Würzburg, Germany,

hereby declare that the equipment described below, by virtue of its design and construction and in the versions placed on the market by us, complies with the relevant essential health and safety requirements of the EU directives.

Name of the product: AREBOS Spa Pool BORA BORA / COPENHAGEN

Model Nr.: AR-HE-SPA7DH/P

Art. Nr.: 4260627426782 ("BORA BORA"); 4260627426751 ("COPENHAGEN")

Should the appliance be modified without our consent, this declaration of conformity will lose its validity.

Tested acc. to:

EU Standard:

EN 60335-2-60: 2003 + A1:2005 + A2 :2008 + A11 :2010 + A12 :2010

EN 60335-1 :2012 + A11 :2014 + A13 :2017 + A1 :2019 + A14 :2019 + A2 :2019

EN 62233 :2008

EN 55014-1 :2017

EN55014-2 :2015

EN IEC 61000-3-2 : 2019

EN 61000-3-3 : 2013+A1 :2019

EN71-3 :2013 + A1 :2014

EC No 1907/2006

Date/Signature Manufacturer/Place:

Würzburg, March 29, 2022



Signature:

Dipl.-Inform. (Univ.) Korhan Canbolat, Managing Director

Representative of these instructions for use/technical data:

Dipl.-Inform. (Univ.) Korhan Canbolat, Managing Director

Office address:

Canbolat Vertriebs GmbH

Gneisenaustraße 10-11

D-97074 Würzburg

Return address can be found in the imprint: <https://www.arebos.de/impressum/>

VAT identification number: DE 263752326

Court of the Commercial Register is Würzburg, HRB 10082

WEEE Reg.-No. DE 61617071